



THERMOCOUPLES RECOVERY OF ONE TRIGA INSTRUMENTED FUEL ROD

A.Z. MESQUITA, A.J. PINTO, M.A. CÂNDIDO.

*Centre of Nuclear Technology Development – CDTN, Brazilian Nuclear Energy Commission - CNEN
Campus da UFMG - Pampulha, CEP: 31.270-901, Belo Horizonte - Brazil*

ABSTRACT

The IPR-R1 TRIGA Mark-I research reactor at the Nuclear Technology Development Centre - CDTN (Belo Horizonte/Brazil) reached its first criticality on November 1960, with a core configuration containing 56 aluminum clad standard TRIGA fuel elements and a maximum thermal power of 30 kW. In order to upgrade the IPR-R1 reactor power, nine stainless steel clad fuel elements were purchased in 1971. One of these fuel elements was instrumented in the centreline with three type K thermocouples. On December 2000, four of these stainless steel clad fuel elements were placed into the core allowing to upgrading the nominal power to 250 kW. In 2004 the instrumented fuel element (IF) was inserted into the core hottest position, predicted by neutronic calculations. The IF stayed in this position up to 2007, allowing heat transfer investigations in several operating powers, including the maximum power of 250 kW. During this time it also monitored the core temperature in all operations. The fuel temperature and other operational parameters were stored in a computer hard disk, with an accessible historical database, in order to make the chronological information on reactor performance and its behavior available to users. After almost 3 years of monitoring the core temperature, it was noticed that the three thermocouples failed in its measures. It was observed the rupture of the thermocouples in the connector placed between the thermoelements wire and its extension cables. This paper describes the methodology used in the recovery of the instrumented fuel element thermocouples, carried out in October of 2008 at CDTN. It was obtained partial success in the restoration of the thermoelements continuity. There are suggested procedures for new recovery and the returning of the IF to the core, improving the operational safety to the reactor. According to the specification of General Atomics Electronic Systems Inc instrumentation, and like several TRIGA reactors in operation today, it is recommended the existence of at least two instrumented fuel elements in the core. The core temperature monitoring in all the operations, is a recommendation of the International Atomic Energy Agency (IAEA), and this parameter is the main operational limit of a nuclear reactor. The core temperature monitoring was adopted in the IPR-R1 TRIGA Safety Analysis Report as safety operational limit and can not exceed 550 °C.

1. Introduction

The IPR-R1 TRIGA Mark-I research reactor at the Nuclear Technology Development Centre - CDTN (Belo Horizonte) reached its first criticality on November 1960, with a core configuration of 57 aluminium clad standard TRIGA fuel elements and a maximum power of 30 kW. From middles of the 60's decade the General Atomics, supplier of the TRIGA

reactor, doesn't manufacture more aluminum clad fuel elements. In order to upgrade the IPR-R1 reactor power, nine stainless steel clad fuel elements were purchased in 1971. One of these fuel elements was instrumented in the centre line with three type K thermocouples. On December 2000, four of these stainless steel clad fuel elements were placed into the core which allowed increasing the nominal reactor power to 250 kW steady state. In 2004 the instrumented fuel element (IF) was inserted in the core hottest position, predicted by neutronic calculations. The IF stayed in this position up to 2007, allowing heat transfer investigations in several operation powers, including in the maximum power of 250 kW. During this time also monitored the core temperature in all operations. The fuel temperature and other operational parameters were stored in a computer hard disk, with an accessible historical database, in order to make the chronological information on reactor performance and its behavior available to users. After almost 3 years of monitoring the core temperature, it was noticed that one of the three thermocouples didn't send more the correct value of the measures. Later on, the other two thermocouples also failed in its measures. It was observed the rupture of the thermocouples in the connector placed between the thermocouples wire and its extension cables.

The instrumented fuel element is in all respects identical to standard fuel elements, except that it is equipped with three chromel-alumel thermocouples (K type), embedded in the fuel meat. The sensitive tips of the thermocouples are located in the centre of the fuel element. Their axial position is one at the half-height of the fuel meat and the other two 2.54 mm above and 2.54 mm below. The IF was purchased in 1971 and placed in the IPR-R1 core reactor on 08.18.2004 and stayed in the core until July, 2007. During this time it monitored the hottest core temperature in all reactor operations and allowed too heat transfer investigations in the new power operation of the reactor of 100 kW to 250 kW [1]. After about 3 years of monitoring the core temperature at the core hottest position, the three thermocouples failed in its measures because the rupture in the connector placed between the thermocouples wire and its extension cables (Fig. 2). On August 2007, the instrumented fuel element was removed from the core and placed in one rack located in the reactor tank inner wall (immersed in the pool water). One year later the IF was removed of the TRIGA pool and put in the well for storage fuel irradiated, filled with water, situated in the reactor room. On October 2008, the IF was raised and started the works the recovery the thermocouples continuity. The works had been concluded with partial success on 10.17.2008.

This paper describes the research project in process in CDTN, supported by the *Fundação de Amparo à Pesquisa do Estado de Minas Gerais (FAPEMIG)* and *Conselho Nacional de Desenvolvimento Científico e Tecnológico (CNPq)*, that has as objective the recovery of the instrumented fuel element of the IPR-R1 TRIGA reactor [2]. The project will improve the accomplishment of neutronic and thermal-hydraulic experiments, foreseen in the CDTN research program. The thermocouple tip is in the centre of the fuel element where the temperature is normally the highest and with the instrumented fuel elements inserted in the locations with maximum power density (the hottest position in the core) provide protection to reactor and contributes to the installation operational safety. Figure 1 shows the IF before and after it was been positioned in the IPR-R1 reactor core.

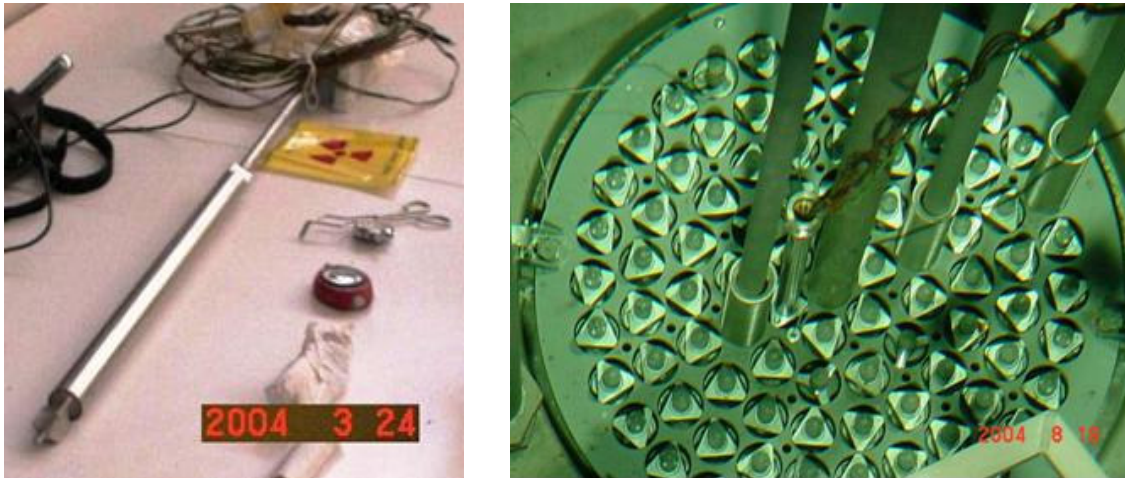


Fig. 1. Instrumented fuel element before and after it was been positioned in the IPR-R1 reactor core.

2. Instrumented fuel element description and the thermocouples breakdown

The TRIGA reactor's fuel element is a cylindrical rod with stainless steel (SS-304) cladding. Its total length is approximately 721 mm with 38.1 mm diameter. Fuel material in each element is 381 mm long. There are 88.1 mm long cylindrical graphite slugs at the top and bottom ends, which act as neutron axial reflectors. In the centre of the fuel material there is a 6.35 mm diameter hole which is filled by a zirconium rod. The fuel is a homogeneous mixture of uranium and zirconium hydride. Standard stainless steel-clad fuel elements with 12 wt % uranium of 20% enrichment (uranium is 20 wt % ^{235}U). The instrumented fuel element has the same nuclear characteristics of the normal fuel element but posses three thermocouples type K (chromel-alumel) thermocouples embedded in its zirconium centreline pin. The IF geometry and dimensions are shown in Fig. 2.

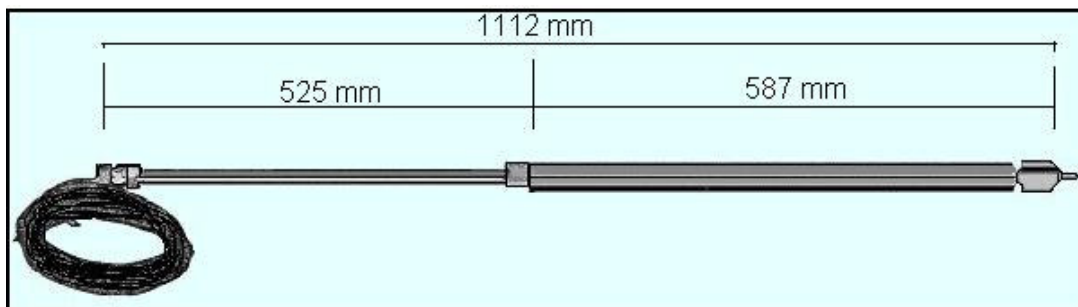


Fig. 2. Instrumented fuel element (serial number 6821TC)

Figure 3 shows the place of the thermocouples breakdown. The thermocouples are manufactured with compacted magnesium oxide (MgO) insulation housed in a stainless steel sheath with 1.0 mm diameter that protects the thermocouple element from the environment. The thermocouples wires have 0.14 mm of diameter [3]. The thermocouples leave the zirconium centreline pin, pass for the graphite reflector, cross the spacer and leave the IF. Approximately at 10 cm of this point exists the connection of the chromel-alumel wires and the extension wires, also made of chromel-alumel (detail of Fig. 3). The rupture occurred in this connector as shown in the photograph of Figure 4. Analyzing the contact place, it could be concluded that the thermo-elements wires had been put in contact with two extension wires without weld and only protected by Epoxy® resin inside one potting sleeve of plastic

material [4]. Possibly, due to the high nuclear radiation it occurred the degradation of the resin and stopped the electrical and mechanical contact between the wires.

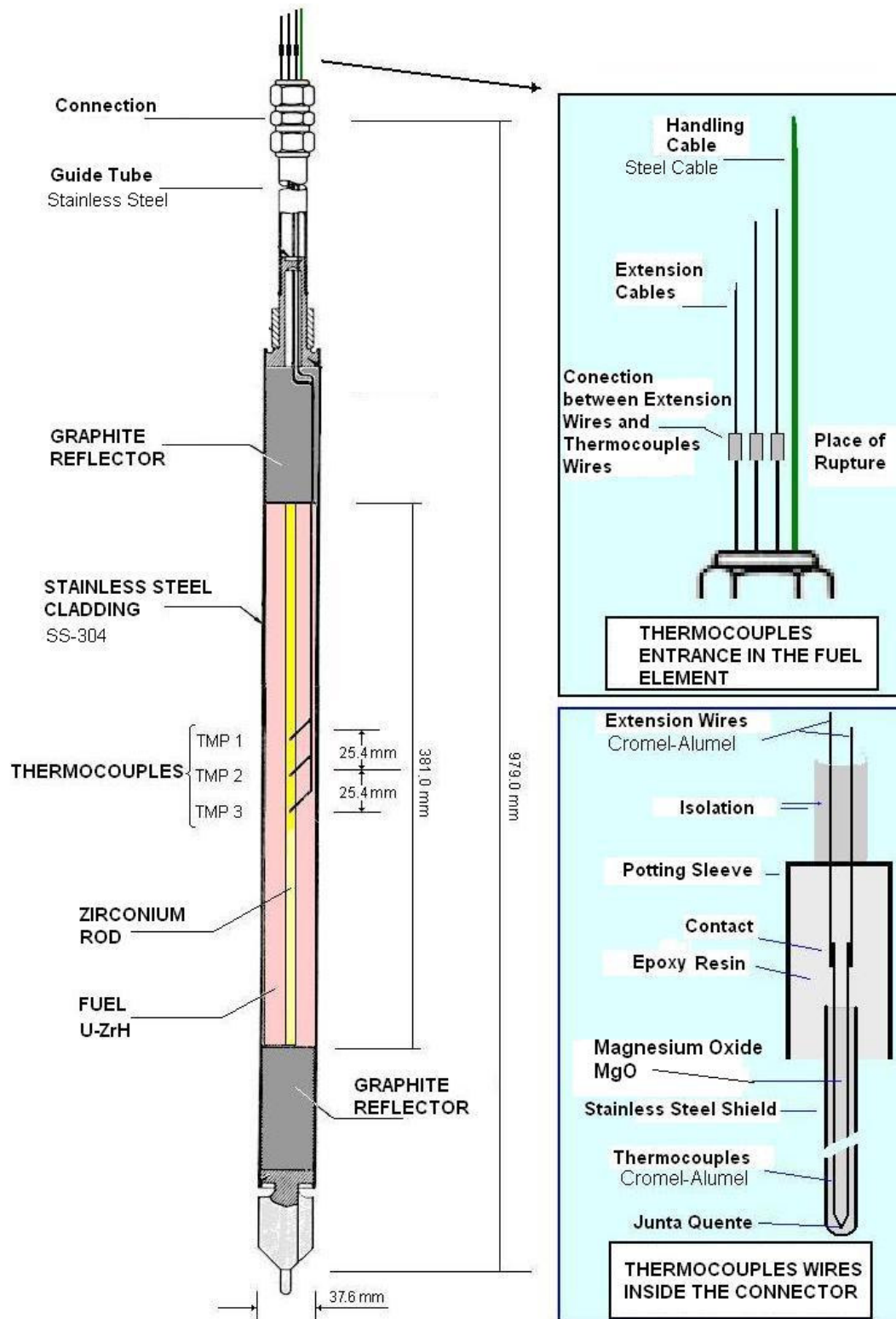


Fig. 3. Instrumented fuel element and thermocouple connector detail

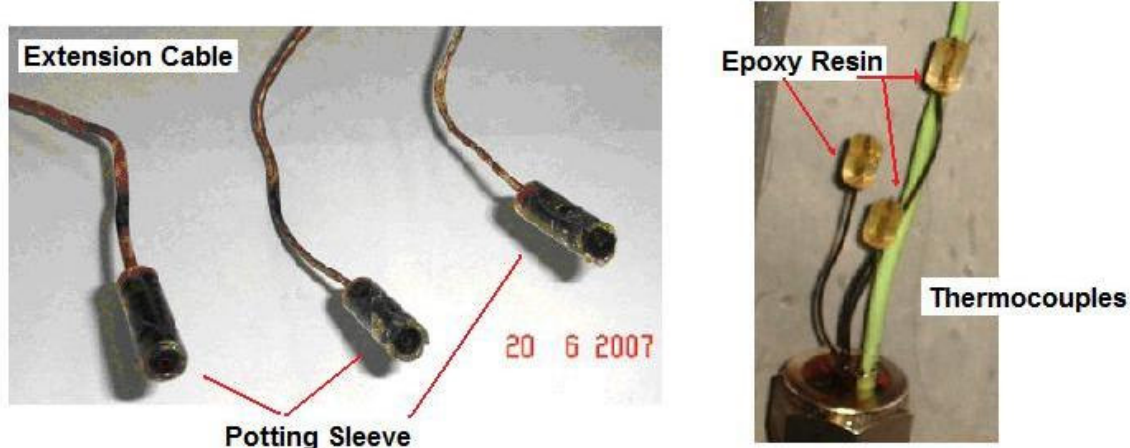


Fig. 4 . The thermocouples and extension cables after the breakdown

3. Instrumented fuel burnup calculation results

The results of the calculations for characterization of the nuclear and thermal parameters of the instrumented fuel element after its withdrawal of the core are presented [5]. The neutronic analyses were performed by using the MCNP (Monte Carlo), ORIGEN and MONTEBURNS codes, considering the instrumented fuel in the core hottest position and a total burnup of 100.2 MWh. The simulations results are shown in the Table 1 and Table 2. The IF had a burnup of 0.2 g of ^{235}U (about 0.5%).

The analysis of radioactive decay of the IF was so strongly conservative, because it was out all the decay occurred during the time that the IF was in the reactor core. The IF was almost 3 years at the reactor core and only about 42 days of irradiation (reactor critical), all the time remaining was decay, which has been taken out in this analysis. The calculations show that after 1 year after the IF withdrawal of the core, the fuel activity was slightly higher than 1 Ci and the decay heat is less than 1 mW and the parameters of radiotoxicity by ingestion and inhalation are within the expected range.

Tab. 1. Calculated results of instrumented fuel element burnup using the MONTEBURNS code [5]

Decay after a burnup of 100.2 MWh (month)	^{235}U Mass* (g)	Activity (Ci)	Decay Heat (mW)	Radiotoxicity by Inhalation (m^3 of air)	Radiotoxicity by Ingestion (m^3 of water)
0	37.8	322.0	886	1.1×10^{10}	1.8×10^4
3	37.8	1.7	0.9	1.1×10^{10}	1.8×10^4
6	37.8	1.5	0.8	1.1×10^{10}	1.8×10^4
9	37.8	1.3	0.7	1.1×10^{10}	1.7×10^4
12	37.8	1.1	0.7	1.1×10^{10}	1.7×10^4

* started with 38.0 g

In all simulations to calculate the dose rates are disregarded any shield, except that provided by air at normal temperature and pressure. Two terms of radiation sources have been determined: the first using the term source code generated by the ORIGEN code and a second, more conservative, in which all the activity calculated for the IF was given the

nuclide Cesium-137 that radiates a unique range of 662 keV in its sequence of disintegration. The dose rate due to neutrons is negligible in relation to the gamma rays contribution. The simulations show that the activity after 12 months of decay has a very strong contribution of the ^{137}Cs and ^{147}Pm fission products.

Table 2 shows the calculations results of dose rates at discharge and after 6 months and 1 year of decay. In each situation the doses were calculated at three different points: the surface (contact with the cladding) in average height of the IF, on the surface and shifted 10 cm away from the average height of the IF, and 1 meter distance in height. As it was to be expected, dose rates calculated on all of disintegrations of Cesium-137 to have more conservative values.

Tab. 2. Calculated results of instrumented fuel element radioactivity dose rate using the MCNP code [5]

Method	Decay Time (months)	Radioactivity dose rate (mRem/h)		
		At contact in the IF average height	At contact and 10 cm distant of IF average height	At 1 m distant of the IF average height
ORIGEN	0	4.4E+05	4.1E+05	5.2E+03
ORIGEN	6	6.8E+03	6.3E+03	8.0E+01
ORIGEN	12	1.3E+03	1.2E+03	1.5E+01
Cesium 137	0	7.9E+06	7.3E+06	9.4E+04
Cesium 137	6	3.7E+04	3.4E+04	4.4E+02
Cesium 137	12	2.7E+04	2.5E+04	3.2E+02

4. Description of the recovery works

With the instrumented fuel element located in the well for irradiated fuel element storages (Fig. 5), it was lifted with the aid of the manipulation steel handle, in way that only the terminal part of the thermocouples was outside the water. Some lead bricks had been placed for improvement of the radiological shield as it can be seen in the photo of Figure 6. but in some places the only shield was the water of the well. The radiation level was measured with a Geiger Counter. In the points where it did not have lead shield the radiation level was of 22 mR/h. In the places shielded with lead the radiation level was little above the reactor room background radiation. The radiation level measured was smaller than the calculated results shown in Table 2 by the Cesium-137 method, but of the same order of magnitude by the ORIGIN method.

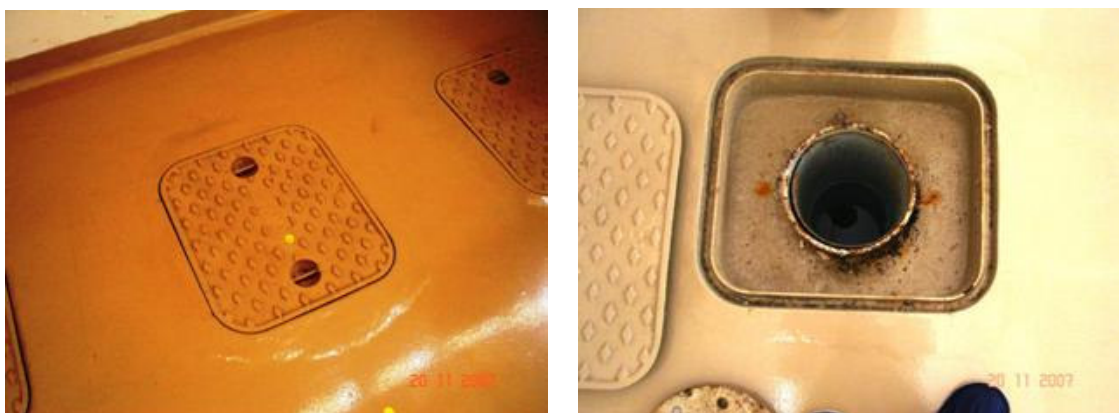


Fig. 5. Well for storage of irradiated fuel element

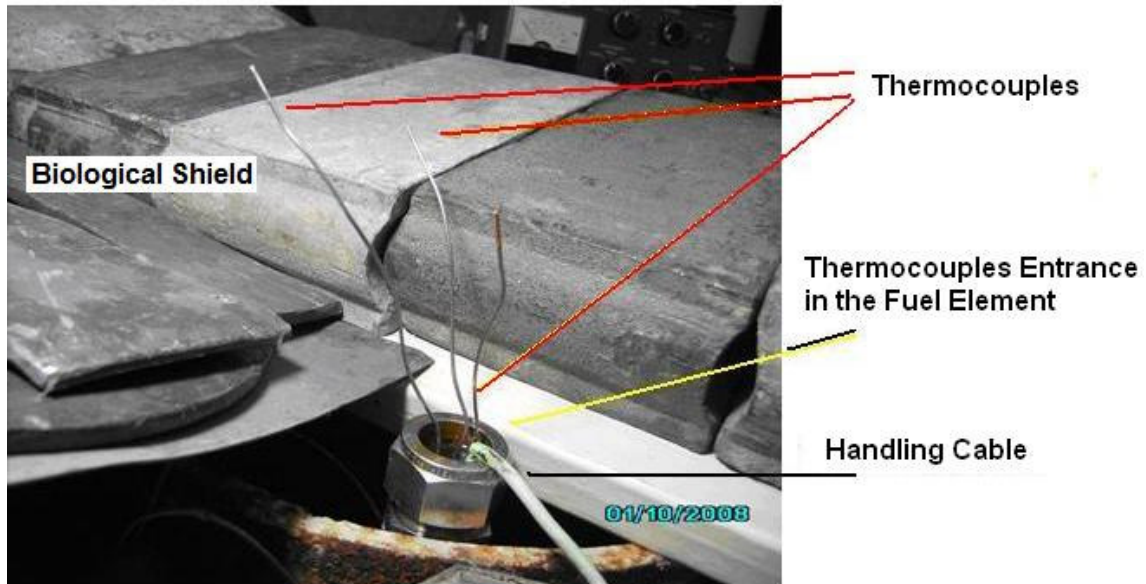


Fig. 6. Place of the rupture of the thermocouples in the instrumented fuel element

4.1 Removal of the stainless steel shield of the thermocouples

The methodology used for removal of the thermocouples shield was by an electrical pulse adjusted to burn only the stainless steel that covering the thermocouples [6]. Electrolytic capacitors had been loaded and its load was used to burn the shield. To find the correct value of electric charge, some preliminary tests with thermocouples of the same diameter of the IF thermocouples was used (1.0 mm). It was confectioned two copper electrodes with a groove of 1 mm in order to accommodate the thermocouple before the electric pulse.

After the removal of the steel shield, the magnesium oxide (MgO) can be easily removed with aid of a clamp. In this way the two thermocouples element wire had been accessible. Figure 7 shows the assembly used for to remove the thermocouples shield.

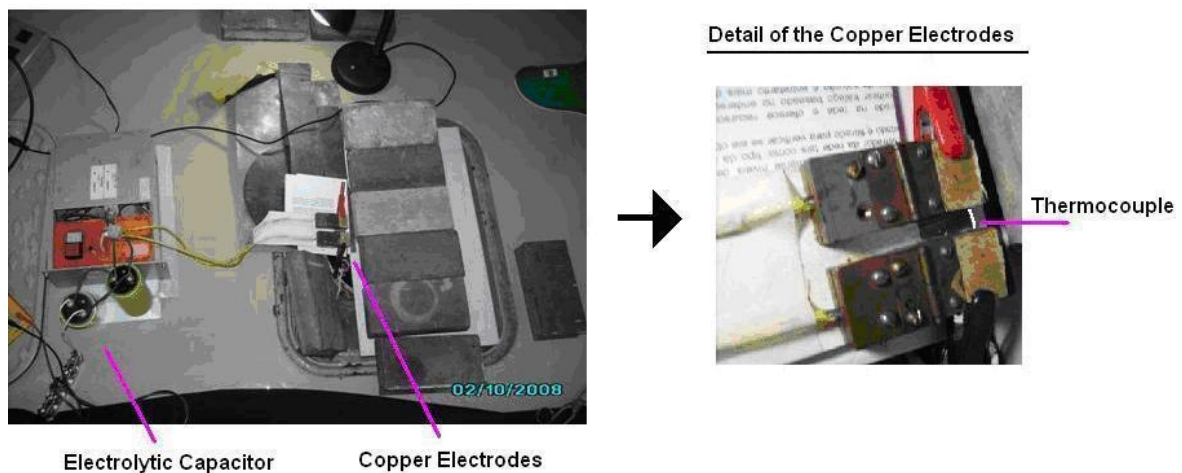


Fig. 7. Assembly used for removal of the thermocouples shield by electric charge

4.2 Identification of the thermocouples wires

The type K thermocouples are composites of two conductors: the chromel alloy and the alumel alloy. The chromel is electrically positive and is non-magnetic, already the alumel is electrically negative and is magnetic. The identification was carried through a small magnetic piece close to the wires, the one that is attracted will be the magnetic wire and the polarity is negative and it is the alumel alloy. The wires had been kept isolated between themselves and between them and the shield. Figure 8 shows two thermocouples after the metallic shield and the magnesium oxide has been removed.

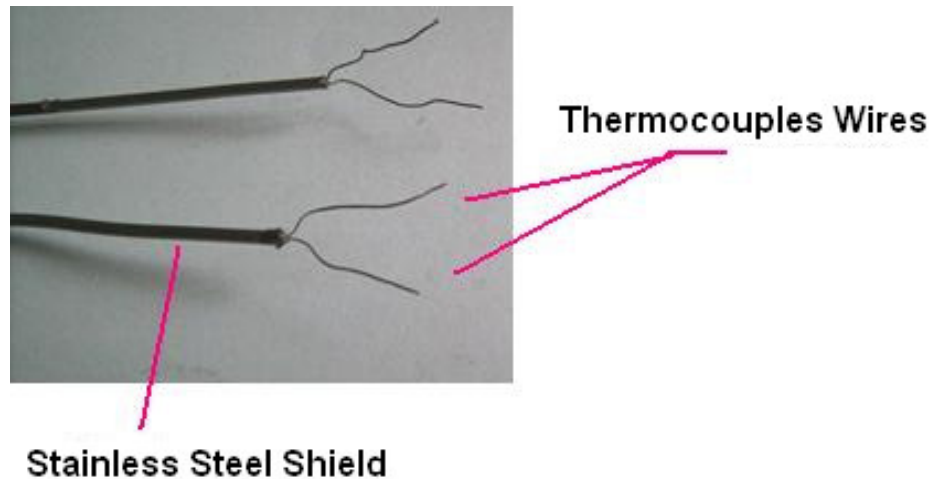


Fig. 8. Two thermocouples after the shield and the MgO isolation has been removed

4.3 Connection of the thermocouples wires

After the thermocouples wires identification, they were been fixed to the screws of the polarized female half connector (confectioned with chromel or alumel alloy). Epoxy resin (Araldite™ of normal drying) was placed to help to fix the thermocouples wires to the connector. The other halves of the connectors (male) had been connected at to new extension type K cable. Figure 9 shows the three thermocouples already fixed at female half of the connectors, this figure also shown detail of the thermocouple connection.



Fig. 9. Thermocouples wires fixed on the connectors

4.4 Quality control

The isolation between thermocouples wires and the stainless shield and the continuity of the wires were tested using a digital multimeter. The temperature was measured with the extension cable connected to one digital temperature indicator. Table 3 shows the results.

Tab. 3. Thermocouples measurements

Thermocouple Position	Wire Electrical Resistance [Ω]	Isolation [Ω]	Temperature [$^{\circ}\text{C}$]
Superior	85.0	22	23.4
Medium	87.4	20	23.6
Inferior	86.1	30	24.2

The thermocouples isolation was very lower than new one and the wire electrical resistances (loop continuities) are correct to this thermocouples kind and dimensions. The water temperature was of the same magnitude order of a calibrated thermocouple that was inserted in the well. So, it was concluded that the instrumented fuel element could return to the reactor core and to monitoring the temperature.

It was made the connection of the connector female half (linked to the thermocouples wires) to the male part of the connector (linked to the extension cables). Layers of silicon rubber were placed inside and around the connector to mechanical and electrical protection. On the other day the IF was lowered until the bottom of the storage fuel irradiated well immersed in water (3m deep). The thermocouples extension cables were connected to the IPR-R1 TRIGA data acquisition system [7]. It was observed that two of the three thermocouples already more did not indicate correctly the temperature.

5. Conclusion

At the moment only one of the IF thermocouples is working and measuring the water temperature of the fuel irradiated storage well, the values are near the surrounding temperature. The behavior of this thermocouple is uncertain if the IF was used to monitoring the reactor core operational temperatures of the order of 190°C , in the reactor operations of 100 kW (or 300°C operating in 250 kW). It is recommended to place the IF in a dry local, with appropriate radiological shield, and did new works to recovery the thermocouples. The fission products decay, present in the fuel, will be provide the heat to dry the magnesium oxide (MgO) used in the isolation between the thermocouples wires and between them and the stainless steel cladding. External source of heat like electrical resistor can be used too to dry the thermocouples elements isolation (MgO).

It is emphasized here the importance of the presence of at least two instrumented fuel elements in the reactor core as current specification of General Atomics Electronic Systems Inc and the example of several existing TRIGA reactor in the world. The IAEA recommends the monitoring of the core temperature in all operations of research nuclear reactor [8]. The fuel temperature is the principal operational nuclear reactor variable and there shall be a system that monitors this parameter and provides a signal that can be utilized in a automatic mode to prevent the value of the temperature from exceeding the safety limit. The fuel temperature was adopted in the IPR-R1 TRIGA Safety Analysis Report as safety operational limit [9]. The fuel temperature should not exceed 550°C . In some operations of the IPR-R1 reactor at 250 kW the fuel centre temperature in the hottest core position reached 310°C [1].

The instrumented fuel element is the main tool used for operational parameters investigation in the neutronics and thermal hydraulics experiments performed in IPR-R1 TRIGA reactor. In addition to recover the actual instrumented fuel element is recommended the purchase of a new one, whose current price is about 80,000 €, as proposed by the manufacturer TRIGA International [10].

6. Acknowledgments

The authors express their thanks to the *Fundação de Amparo à Pesquisa do Estado de Minas Gerais (FAPEMIG)* and to the *Conselho Nacional de Desenvolvimento Científico e Tecnológico (CNPq)* for the financial support.

7. References

1. Mesquita, A.Z., "Experimental Investigation on Temperatures Distributions in a Research Nuclear Reactor TRIGA IPR-R1", Ph.D thesis, Universidade Estadual de Campinas, São Paulo, Brazil (in Portuguese), (2005).
2. Mesquita, A.Z., "Atualização e Recuperação da Instrumentação do Reator Nuclear de Pesquisa TRIGA IPR-R1". Edital 03/08. Programa Pesquisador Mineiro II. Projeto de Pesquisa. Processo FAPEMIG 031-08. (2008).
3. Gulf General Atomic, "Instrumented Fuel Elements Specifications". San Diego. Califórnia (1971).
4. Gulf General Atomic, "15" SST Fuel Element Assembly Instrumented Core". San Diego. CA. Drawing Number TOS210J220 (1972).
5. Dalle, H.M, "Simulação da Queima e Determinação de Taxas de Dose para o Elemento Combustível Instrumentado do Reator TRIGA IPR-R1". Belo Horizonte: CNEN/CDTN, CDTN -NI-EC3-01/09 (2009).
6. Mesquita, A.Z.; Ladeira, L.C.D., "Dispositivo para Desencapar Termopares de Isolamento Mineral pela Remoção de sua Blindagem por Corrente Elétrica". Patente de Invenção. No. 8503430. Depositado no INPI em 08.07 (1985).
7. General Atomics Electronic Systems Inc., "Reactor Instrumentation & Control System Console for 100 kW IPR-R1 TRIGA Reactor CDTN TRIGA[®] Reactor Facility at Belo Horizonte". (GA-ESI) Brazil. July (2008).
7. Mesquita, A.Z. and Rezende, H.C., "Data Acquisition System for TRIGA Mark I Nuclear Research Reactor of CDTN". *Proceedings of the America Nuclear Energy Symposium (ANES 2004)*, Miami Beach, Flórida, USA. America Nuclear Energy (2004).
8. IAEA - International Atomic Energy Agency, "Operational Limits and Conditions of Research Reactors". Safety Series No. 35-G6. Vienna (1995).
9. CDTN/CNEN, "Safety Analysis Report of the IPR-R1 TRIGA Reactor" (RASIN/TRIGA-IPR-R1/CDTN). Belo Horizonte: CDTN. (in Portuguese) (2007).
10. TRIGA International, "Supply of TRIGA[®] Fuel Rods". TIFP 001-08. Rev. 1 (Oct 08). 31 CERCA. Lyon. October (2008)